

Your Single Provider for Treatment Response Monitoring

CLINICAL TRIAL ASSAY BASED ON

FOUNDATIONONE® TRACKER

POWERED BY  **natera™**

TISSUE-INFORMED

Test Features



Fast, comprehensive insights on treatment response from a **tissue baseline test** and **subsequent blood samples**



Sensitive, personalized tracking using 2-16 short variants from a tissue baseline derived from FoundationOne®CDx



Inform **targeted therapy clinical development** or **immunotherapy combination strategies** across solid tumors



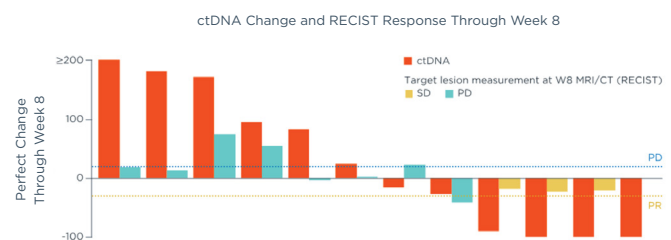
FoundationOne®Tracker is now available for use in **retrospective³** and **prospective⁴** clinical trials.

CLINICAL TRIAL ASSAY BASED ON

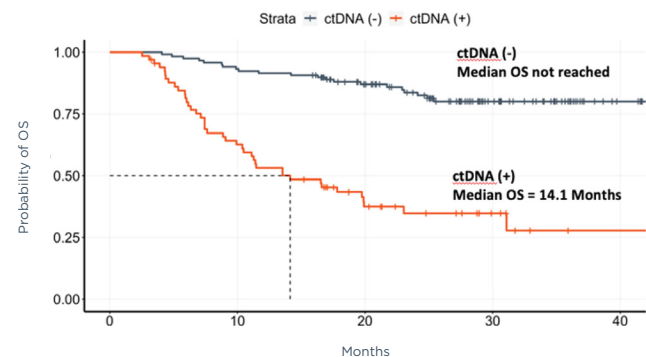
FOUNDATIONONE® MONITOR

(Test Features on Reverse Side)

Assessing ctDNA Changes During Treatment Enables Molecular Insights into Response¹



Pre-Treatment ctDNA Presence Can Identify Patients Likely to Respond to Treatment²



1. Powles, T. et al. Molecular residual disease detection with a tissue CGP informed personalized monitoring assay: an exploratory analysis of the IMvigor010 observation arm. ASCO GU. Feb 2022

2. Kansara, M. et al. Molecular Oncology. 2022. <https://doi.org/10.1002/1878-0261.13349>

3. For Research Use Only. Not for use in diagnostic procedures.

4. For Investigational Use Only. The performance characteristics of this product have not been established.

CLINICAL TRIAL ASSAY BASED ON

FOUNDATIONONE® TRACKER

POWERED BY 

CLINICAL TRIAL ASSAY BASED ON

FOUNDATIONONE® MONITOR

BLOOD ONLY/TISSUE-NAÏVE

Test Features



Evaluates changes in ctDNA levels over time to complement standard imaging in early-phase clinical research

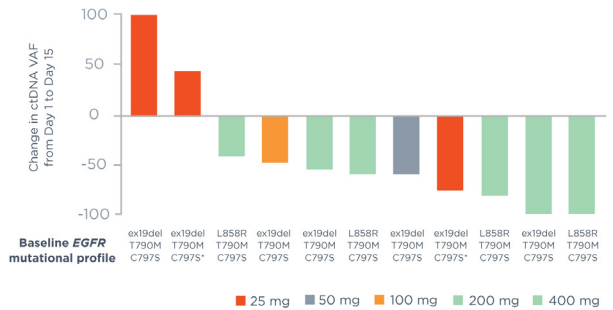


Monitor individual variants or assess resistance to therapy across more than 300 genes

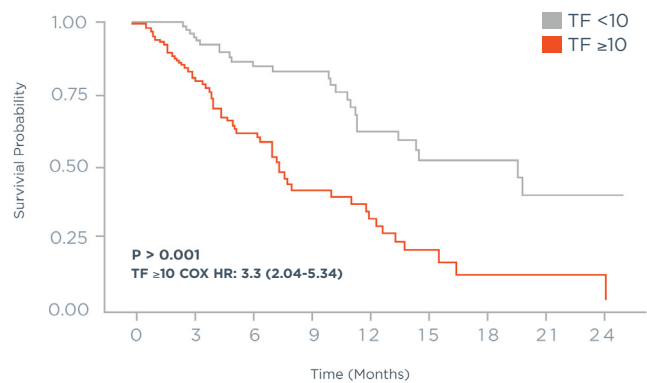


Quantify ctDNA Tumor Fraction (TF), a biomarker that incorporates multi-omic information to improve sensitivity and maintain high specificity to monitor ctDNA levels

Serial ctDNA Testing Can Identify Treatment-Demonstrated Activity Across Different Doses¹



Retrospective Assessment of ctDNA Tumor Fraction (TF) at a Pre-Treatment Timepoint Can Stratify Subjects for Response²



FoundationOne Monitor is **now available for contracting** to add **molecular response insights** to your **retrospective³** and **prospective⁴** clinical trials.

FoundationOne Monitor is based on the Foundation Medicine liquid platform.

1. Shum E, et al. Abstract presented at AACR 2022. Abstract CT184.
2. Reichert, Z.R., et al. Annals of Oncology. 2022. DOI: <https://doi.org/10.1016/j.annonc.2022.09.163>.
3. For Research Use Only. Not for use in diagnostic procedures.
4. For Investigational Use Only. The performance characteristics of this product have not been established.